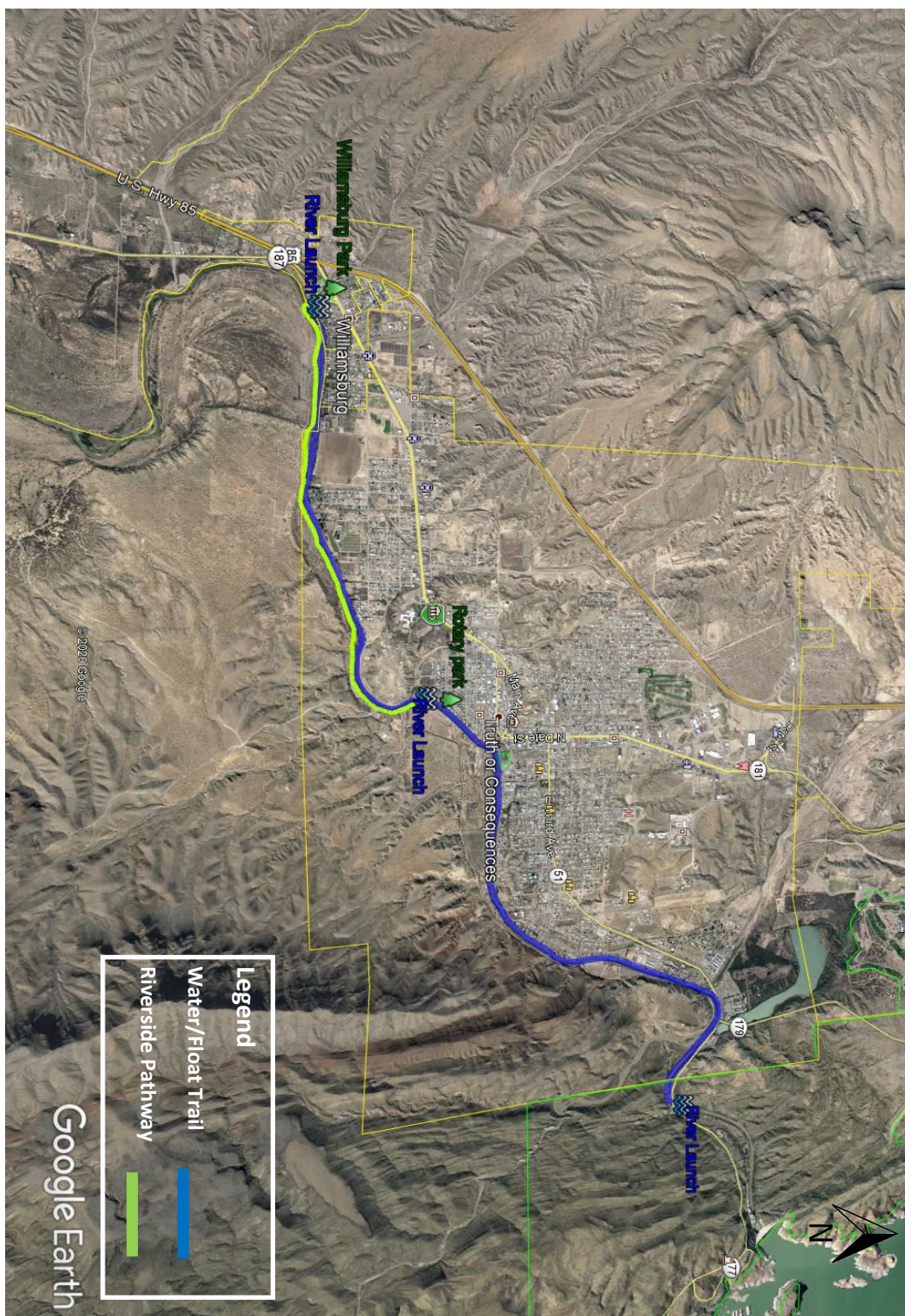


# *Rio Grande Trails*

*Our Community idea!*



*Pedestrian bridge crossings in Williamsburg and Torc with abundant trail opportunities on the east side of the Rio Grande.*



### Legend

Water/Float Trail

Riverside Pathway

Google Earth



In late 2019 the City of Truth or Consequences was awarded a planning grant from the National Park Service Rivers, Trails and Conservation Assistance Program for the purpose of developing a 3 mile trail route on the east side of the Rio Grande from Rotary Park south to Williamsburg, and a complementary multi-use trail system on adjacent federal lands.

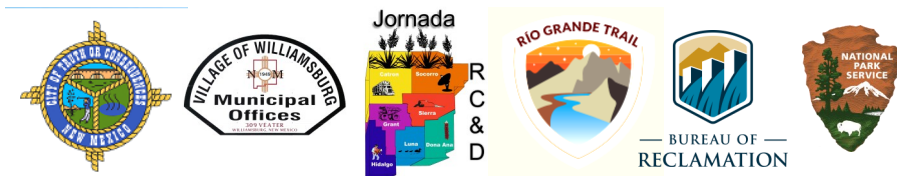
When completed, this Trail Network would:

- ◆ Let you hike, bike, run on a riverside trail from TorC to Williamsburg
- ◆ Provide public lands access on the east side of the Rio Grande
- ◆ Become part of the Rio Grande Trail - a 500 mile cross-state recreational trail
- ◆ Improve the paddling and tubing river access from Elephant Butte Dam to Williamsburg
- ◆ Teach about the pre-historical and historical settlements along the Rio Grande valley
- ◆ Increase river conservation efforts through education and habitat improvement projects
- ◆ Improve quality of life for residents by supporting healthy, active lifestyles
- ◆ Boost our adventure tourism opportunities

A project planning team has formed and it serves as a community voice for the project, assuring we explore all good opportunities and understand and address community concerns. The planning team's primary task is to develop a "trail concept plan" in 12 months which will be hopefully adopted by various local governments and land management agencies.


Our planning principles include:

- ☑ Respecting private property interests along the proposed trail corridor
- ☑ Listening to and addressing community concerns
- ☑ Keeping the community informed
- ☑ Working with all federal and state land management planning processes to assure our project goals align with various resource or administrative policies of those agencies.



**For more information or to GET INVOLVED:**

<https://www.facebook.com/SierraCountyTrails/>



SCAN ME

Merry Jo Fahl — [jornadaresourceconservationdev@gmail.com](mailto:jornadaresourceconservationdev@gmail.com)

Gina Kelley — [gina@hotspringsmarketingnm.com](mailto:gina@hotspringsmarketingnm.com)

Attila Bality — [attila\\_bality@nps.gov](mailto:attila_bality@nps.gov)

July 2020