







KEYED NOTES:

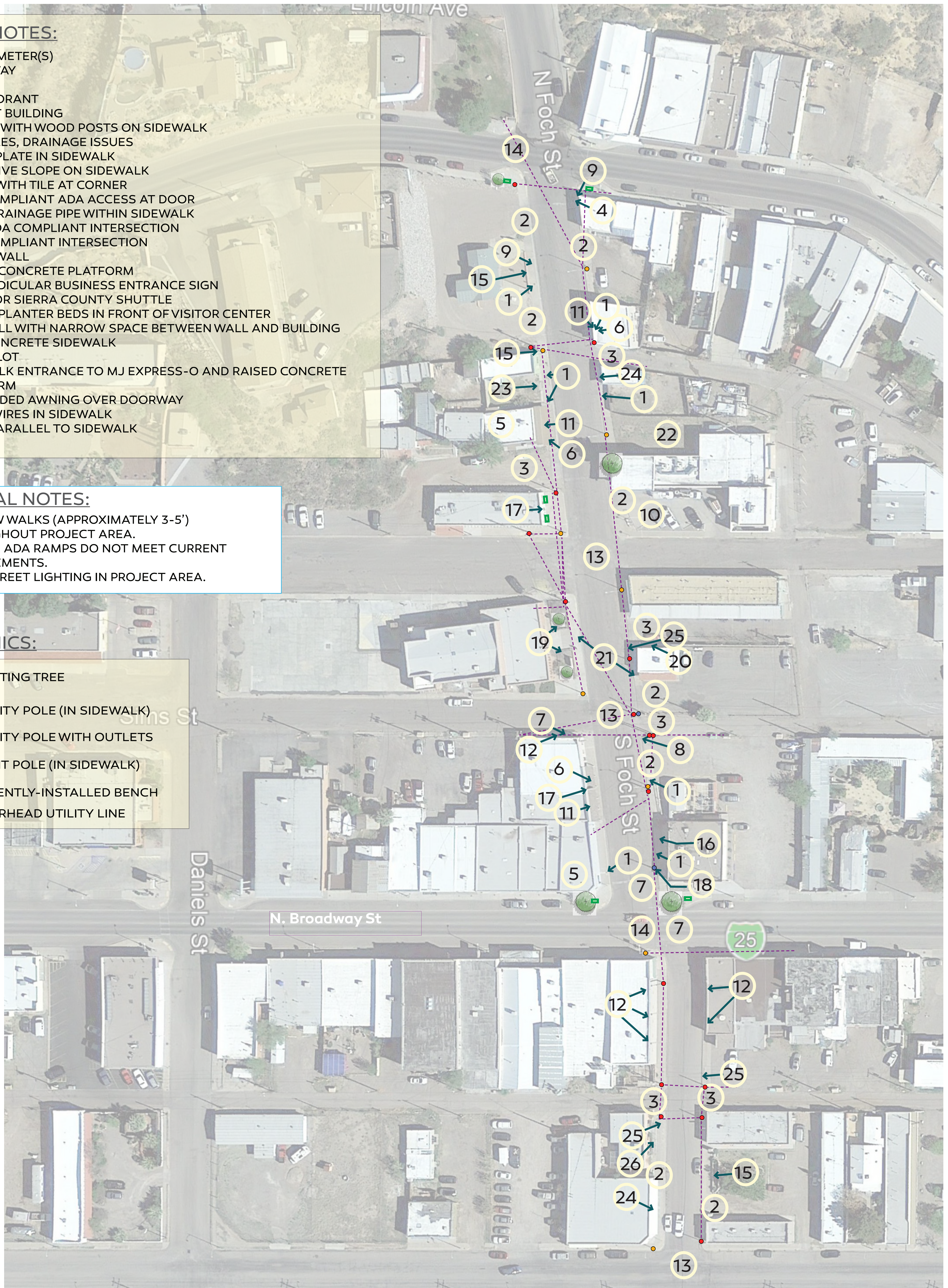
1. WATER METER(S)
2. DRIVE WAY
3. ALLEY
4. FIRE HYDRANT
5. VACANT BUILDING
6. PORTAL WITH WOOD POSTS ON SIDEWALK
7. POTHOLES, DRAINAGE ISSUES
8. METAL PLATE IN SIDEWALK
9. EXCESSIVE SLOPE ON SIDEWALK
10. BENCH WITH TILE AT CORNER
11. NON COMPLIANT ADA ACCESS AT DOOR
12. ROOF DRAINAGE PIPE WITHIN SIDEWALK
13. NON-ADA COMPLIANT INTERSECTION
14. ADA-COMPLIANT INTERSECTION
15. SHORT WALL
16. RAISED CONCRETE PLATFORM
17. PERPENDICULAR BUSINESS ENTRANCE SIGN
18. STOP FOR SIERRA COUNTY SHUTTLE
19. RAISED PLANTER BEDS IN FRONT OF VISITOR CENTER
20. 6 FT WALL WITH NARROW SPACE BETWEEN WALL AND BUILDING
21. NEW CONCRETE SIDEWALK
22. EMPTY LOT
23. SIDEWALK ENTRANCE TO MJ EXPRESS-O AND RAISED CONCRETE PLATFORM
24. SUSPENDED AWNING OVER DOORWAY
25. GUIDE WIRES IN SIDEWALK
26. RAMP PARALLEL TO SIDEWALK

GENERAL NOTES:

- NARROW WALKS (APPROXIMATELY 3-5') THROUGHOUT PROJECT AREA.
- CERTAIN ADA RAMPS DO NOT MEET CURRENT REQUIREMENTS.
- ONLY STREET LIGHTING IN PROJECT AREA.

GRAPHICS:

-  EXISTING TREE
-  UTILITY POLE (IN SIDEWALK)
-  UTILITY POLE WITH OUTLETS
-  LIGHT POLE (IN SIDEWALK)
-  RECENTLY-INSTALLED BENCH
-  OVERHEAD UTILITY LINE



LANDSCAPE ARCHITECTS
Morrow Reardon Wilkinson Miller, Ltd.



TRUTH OR CONSEQUENCES NEW MEXICO

SITE ANALYSIS